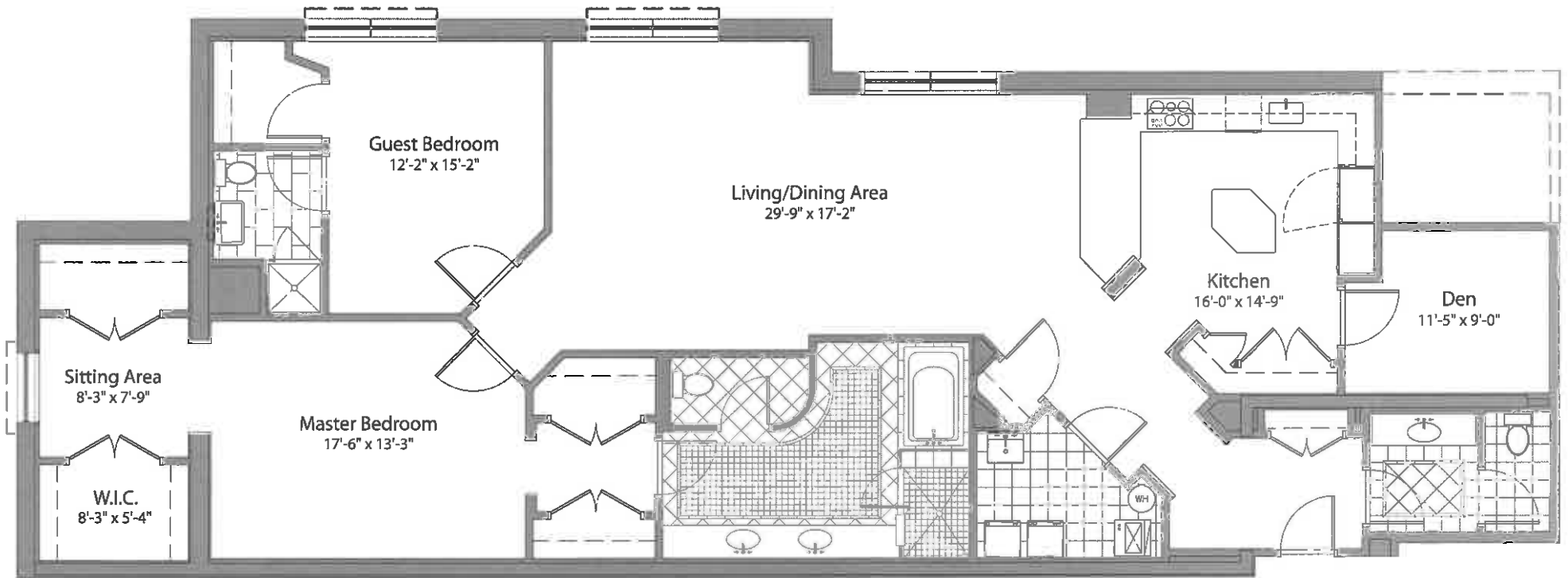


**THE BRYNCHESTER**  
a residential condominium

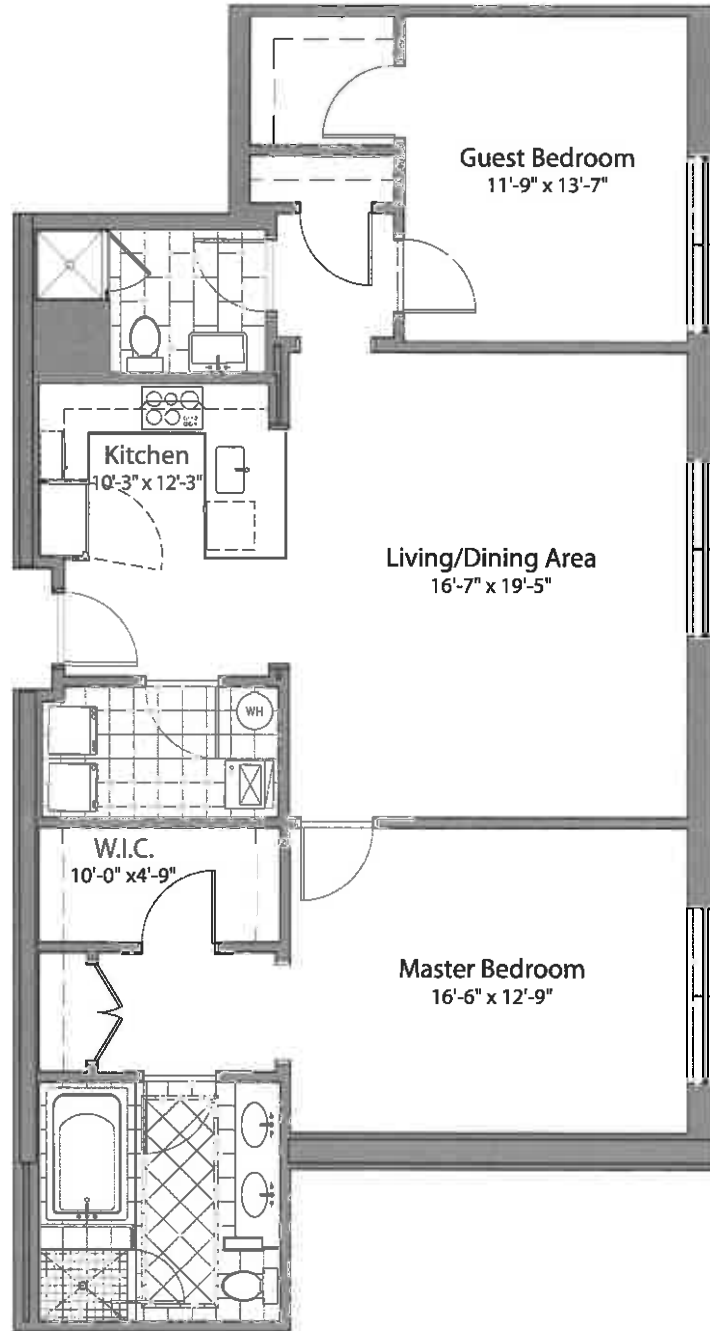


*The Hampton — 2,205 \$, 2,279 \$, 2,330 \$*

*All dimensions and details are approximate and subject to construction or other variations.  
All plans are the exclusive property of Builder and may not be copied or used without written consent.*

**Suites 13 23 33**

**THE BRYNCHESTER**  
a residential condominium

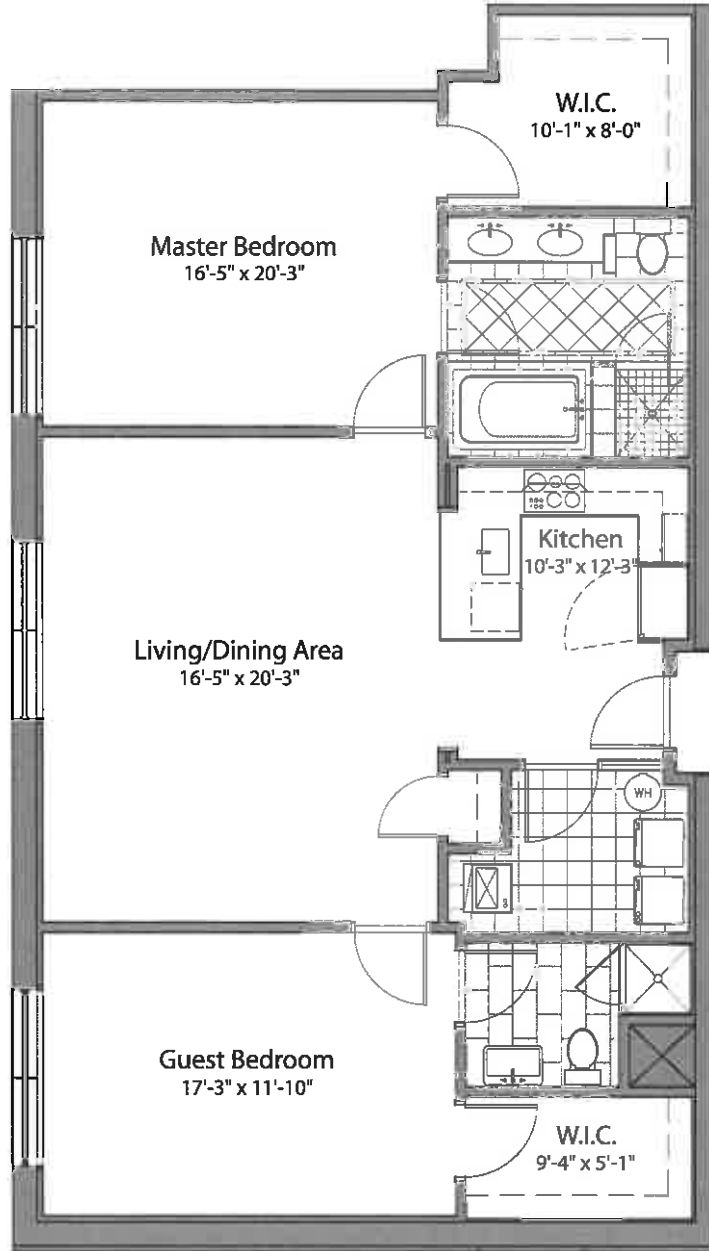


*The Logan — 1,314 sf*

*All dimensions and details are approximate and subject to construction or other variations.  
All plans are the exclusive property of Builder and may not be copied or used without written consent.*

**Suites 16 26 36**

**THE BRYNCHESTER**  
a residential condominium

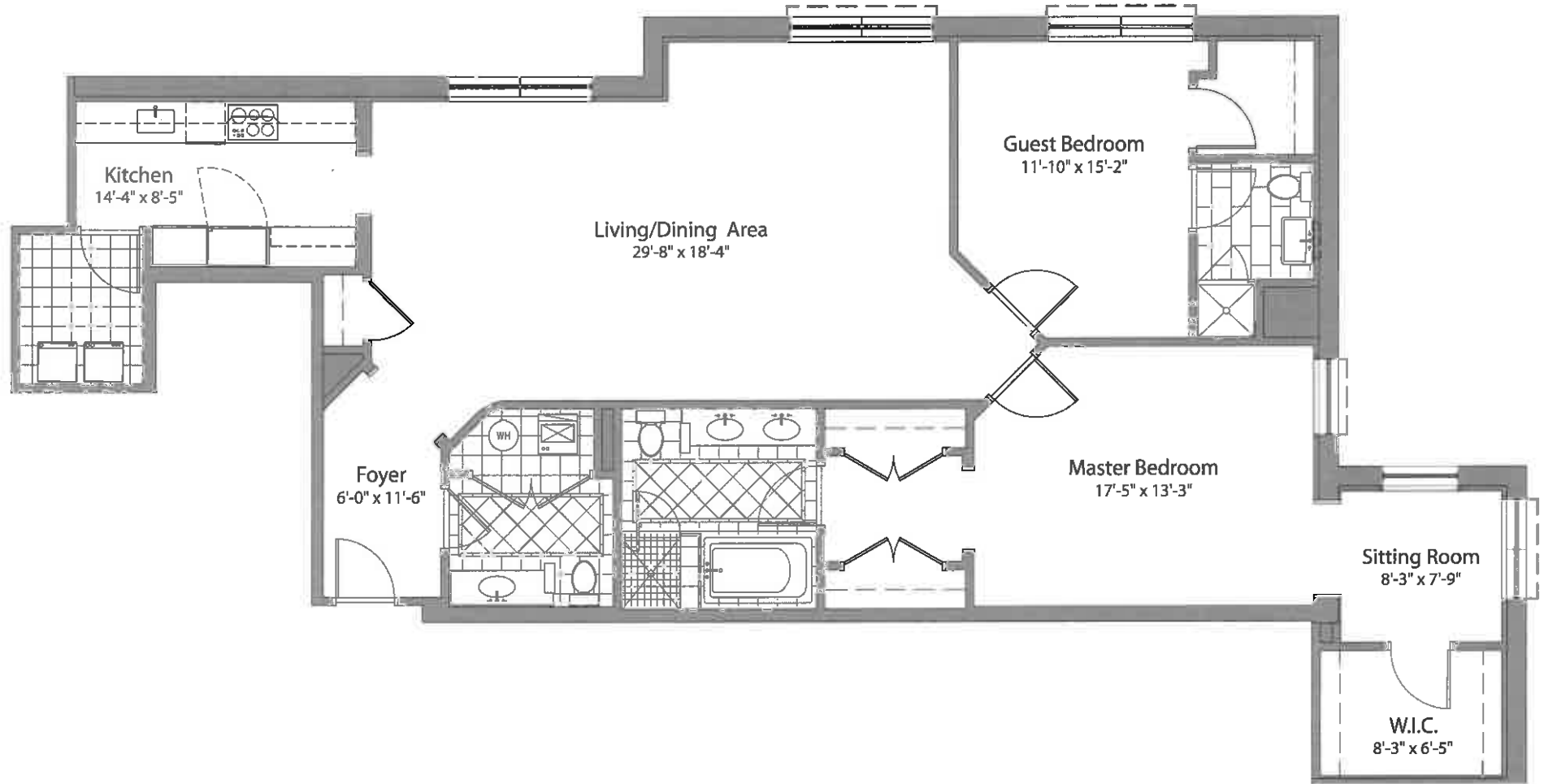


*The Markham — 1,357 sf*

*All dimensions and details are approximate and subject to construction or other variations.  
All plans are the exclusive property of Builder and may not be copied or used without written consent.*

**Suites 15 25 35**

**THE BRYNCHESTER**  
a residential condominium

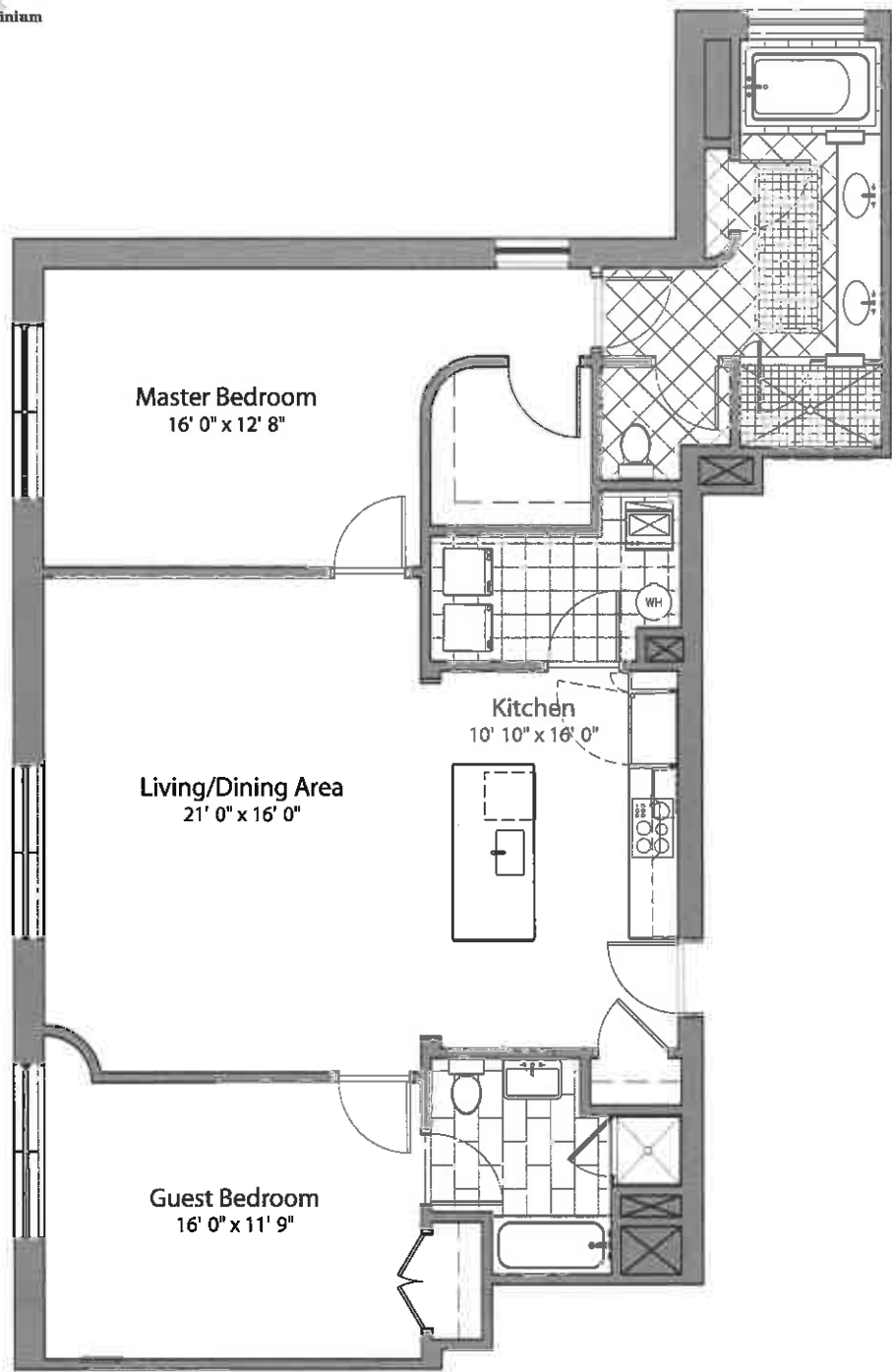


*The Northumberland — 1,776 \$, 1,776 \$, 1,835 \$*

*All dimensions and details are approximate and subject to construction or other variations.  
All plans are the exclusive property of Builder and may not be copied or used without written consent.*

**Suites 14 24 34**

**THE BRYNCHESTER**  
a residential condominium

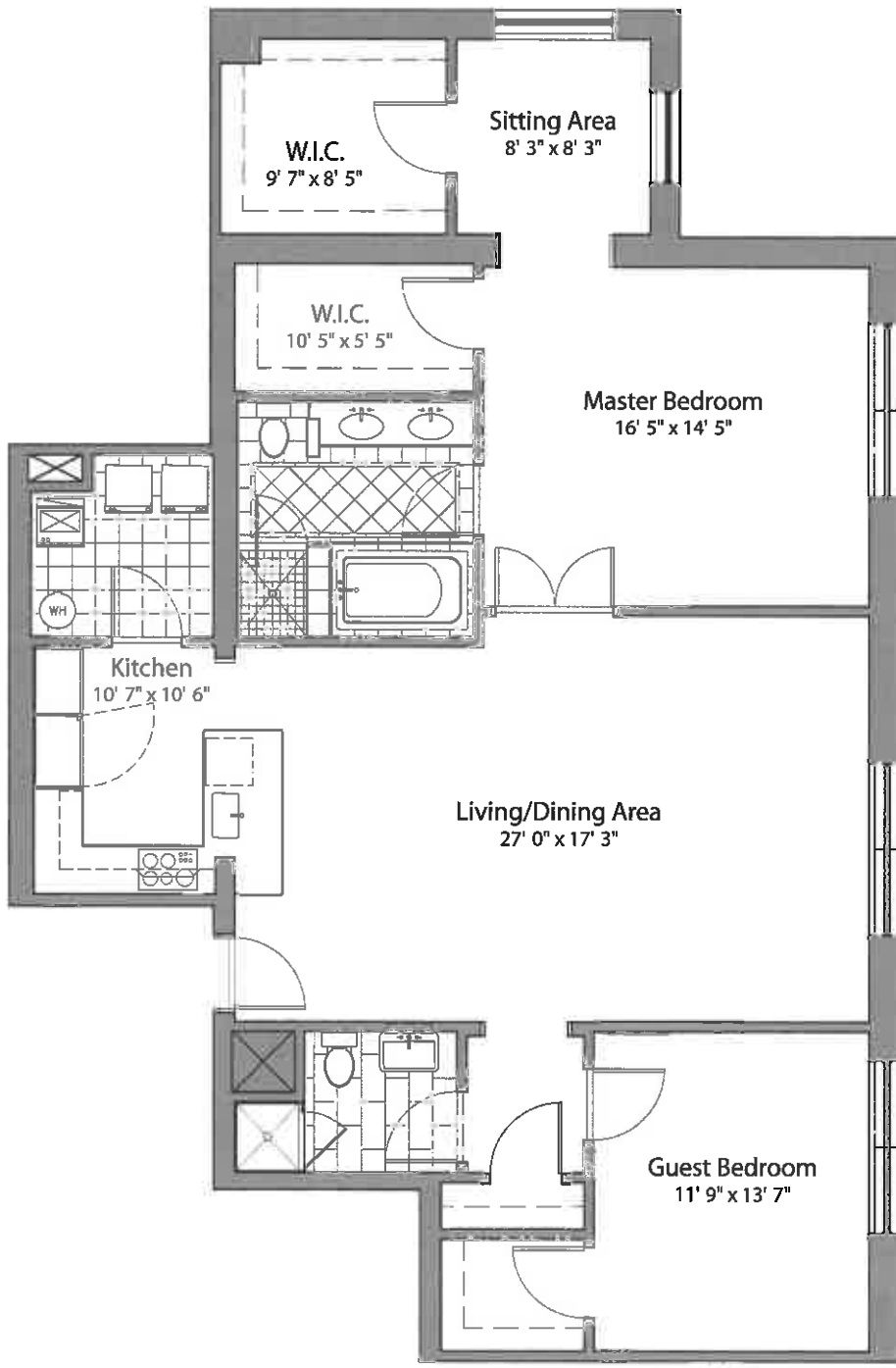


*The Oxford — 1,420 sf*

*All dimensions and details are approximate and subject to construction or other variations.  
All plans are the exclusive property of Builder and may not be copied or used without written consent.*

**Suites 17 27 37**

**THE BRYNCHESTER**  
a residential condominium

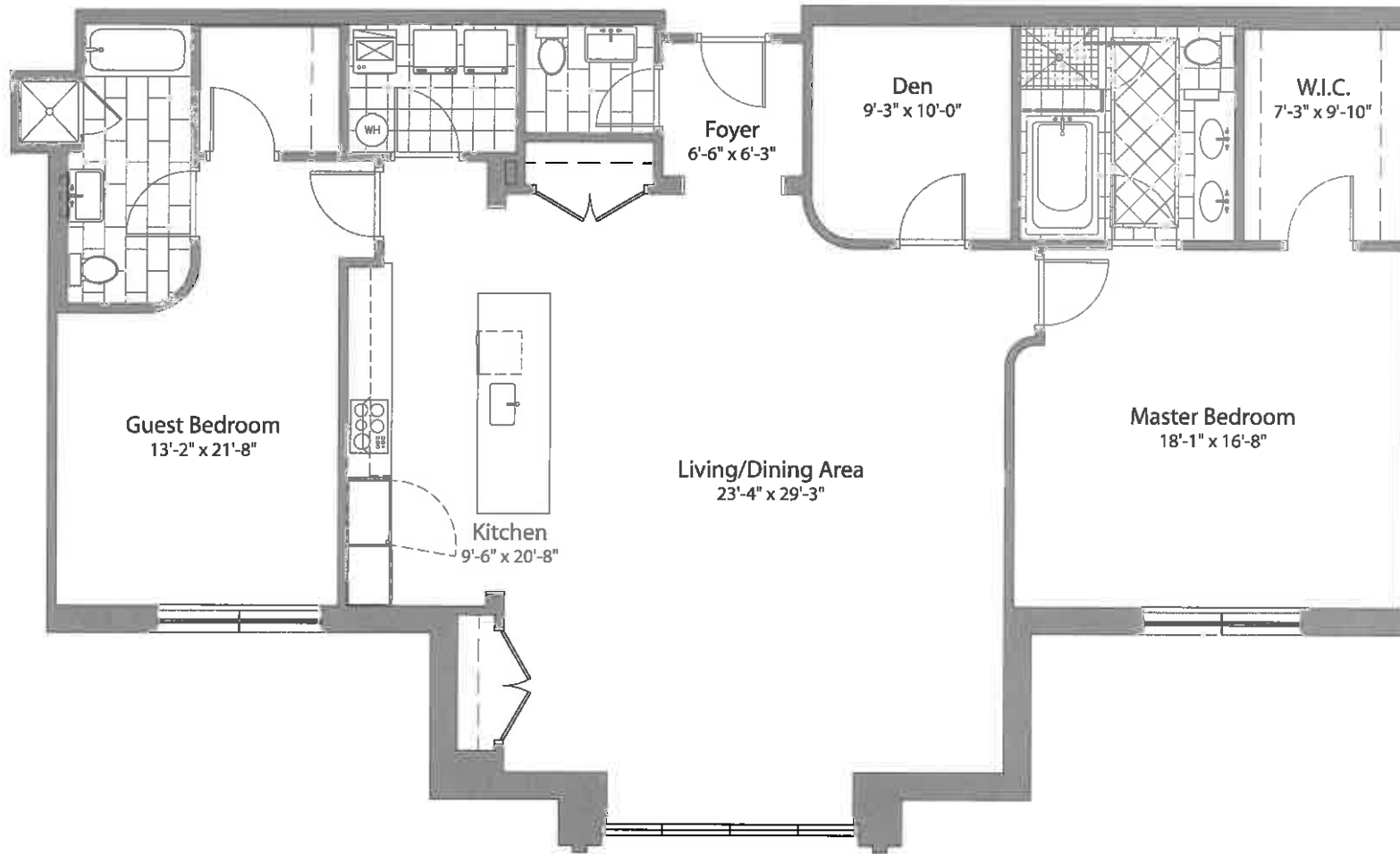


*The Savill — 1,569 sf*

*All dimensions and details are approximate and subject to construction or other variations.  
All plans are the exclusive property of Builder and may not be copied or used without written consent.*

**Suites 18 28 38**

**THE BRYNCHESTER**  
a residential condominium

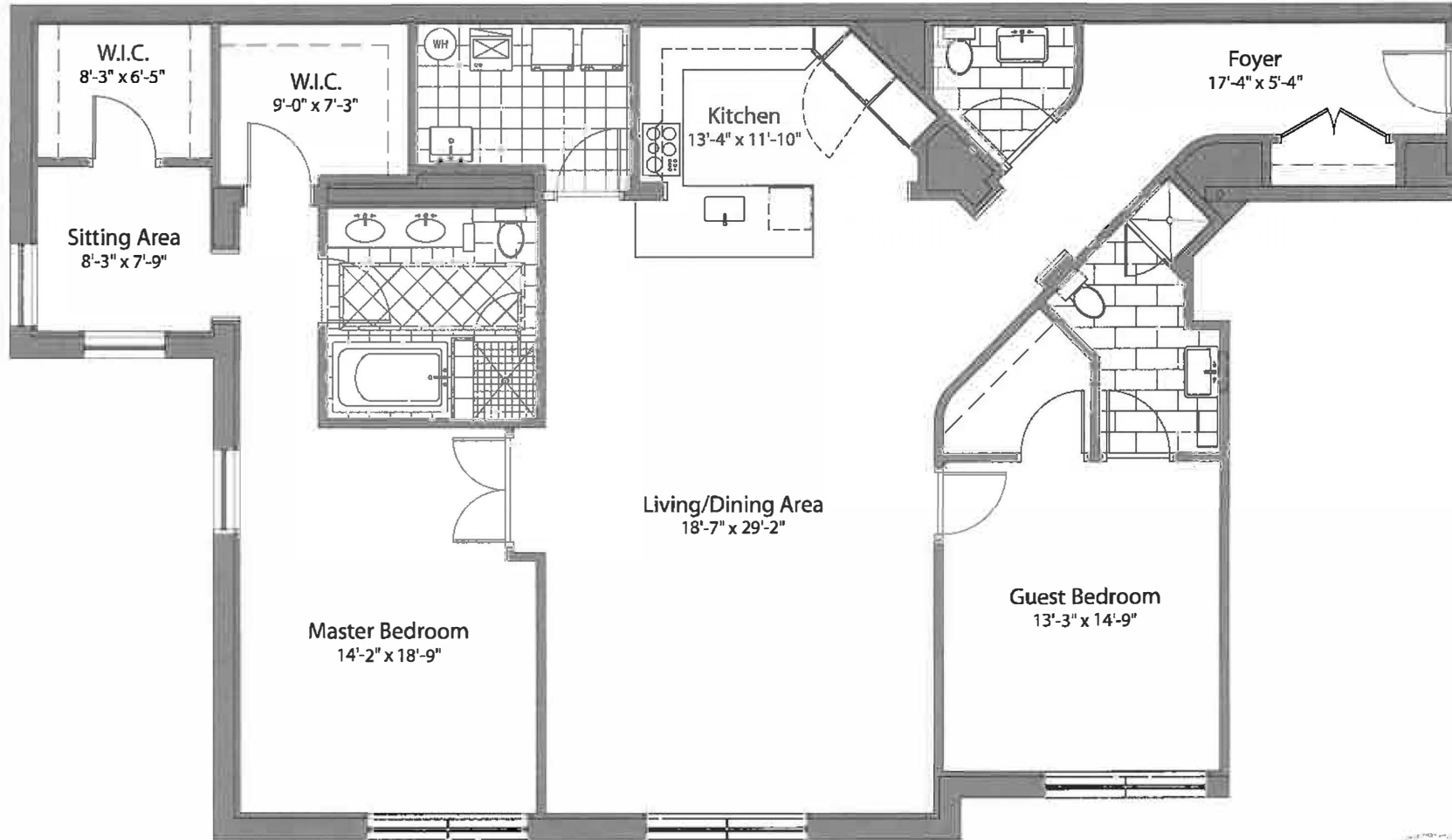


*The Sterling — 1,998 sf, 2,022 sf*

*All dimensions and details are approximate and subject to construction or other variations.  
All plans are the exclusive property of Builder and may not be copied or used without written consent.*

**Suites 20 30**

**THE BRYNCHESTER**  
a residential condominium



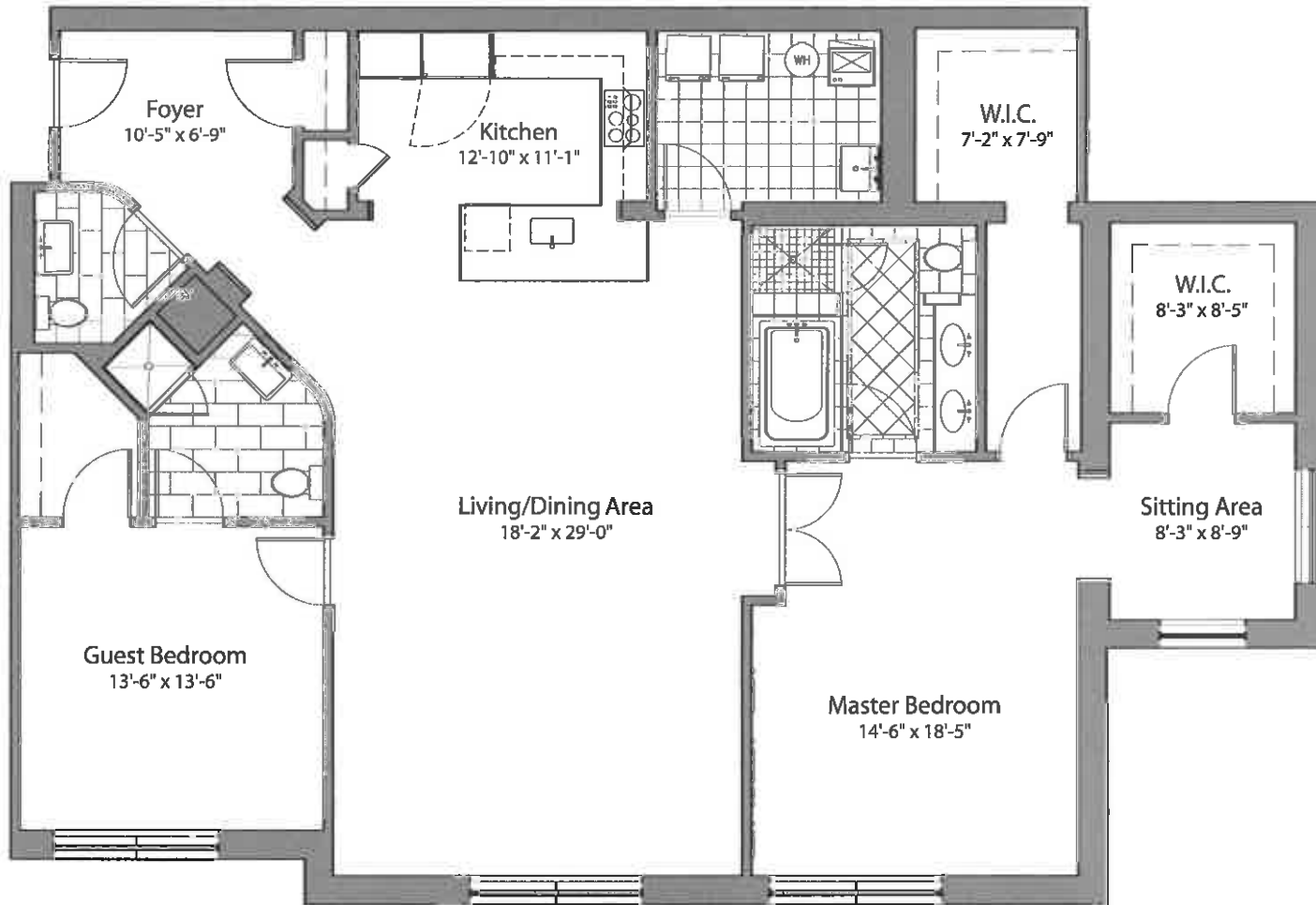
*The Turnberry — 2,011 sf, 2,083 sf*

*All dimensions and details are approximate and subject to construction or other variations.  
All plans are the exclusive property of Builder and may not be copied or used without written consent.*

**Suites 21 31**



**THE BRYNCHESTER**  
a residential condominium

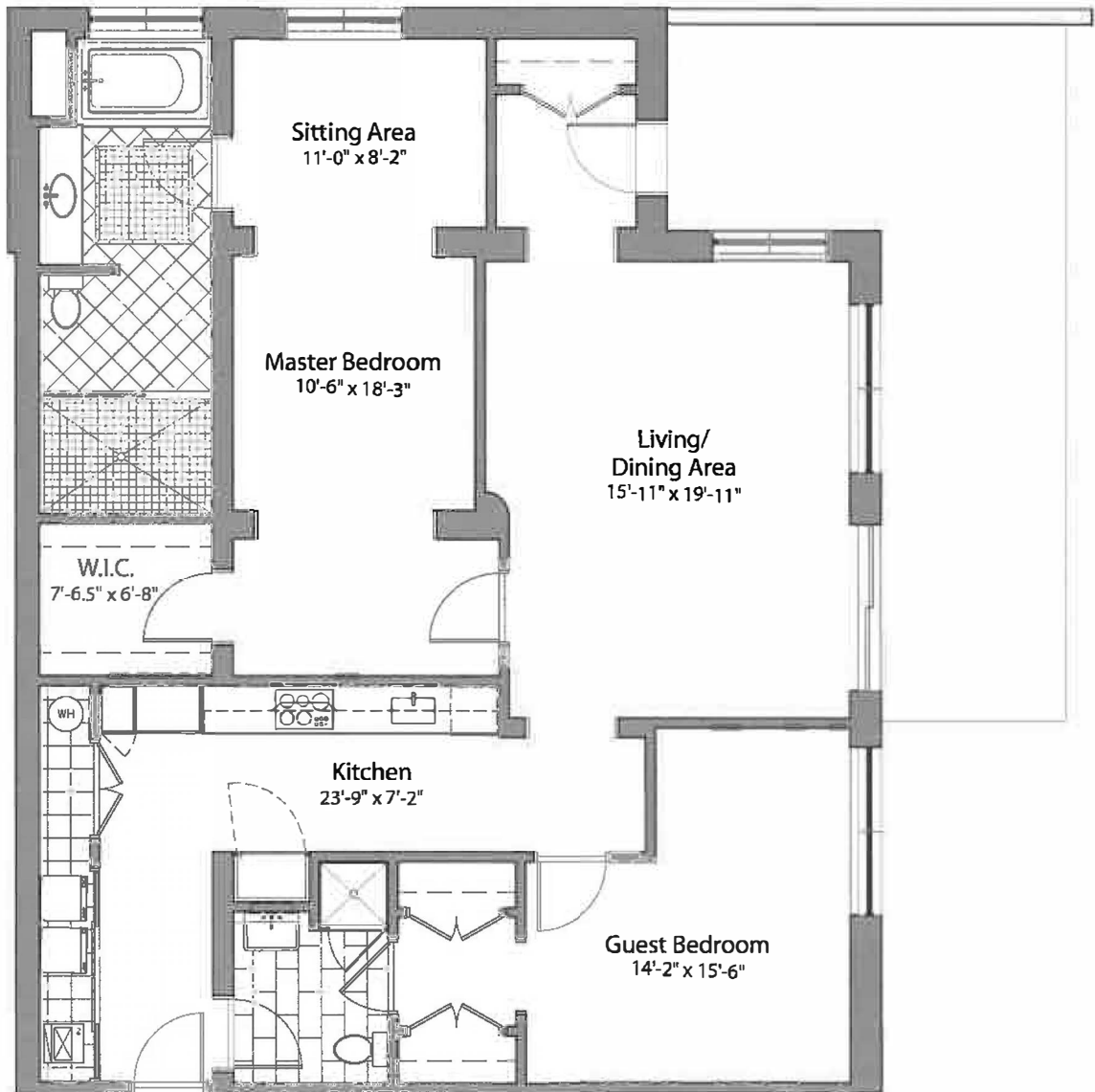


*The Yorks — 1,948 sf, 2,006 sf*

*All dimensions and details are approximate and subject to construction or other variations.  
All plans are the exclusive property of Builder and may not be copied or used without written consent.*

*S*  
**Suites 22 32**

**THE BRYNCHESTER**  
a residential condominium



*The Ashley — 1,607 sf*

*All dimensions and details are approximate and subject to construction or other variations.  
All plans are the exclusive property of Builder and may not be copied or used without written consent.*

*S*  
**Suite 10**